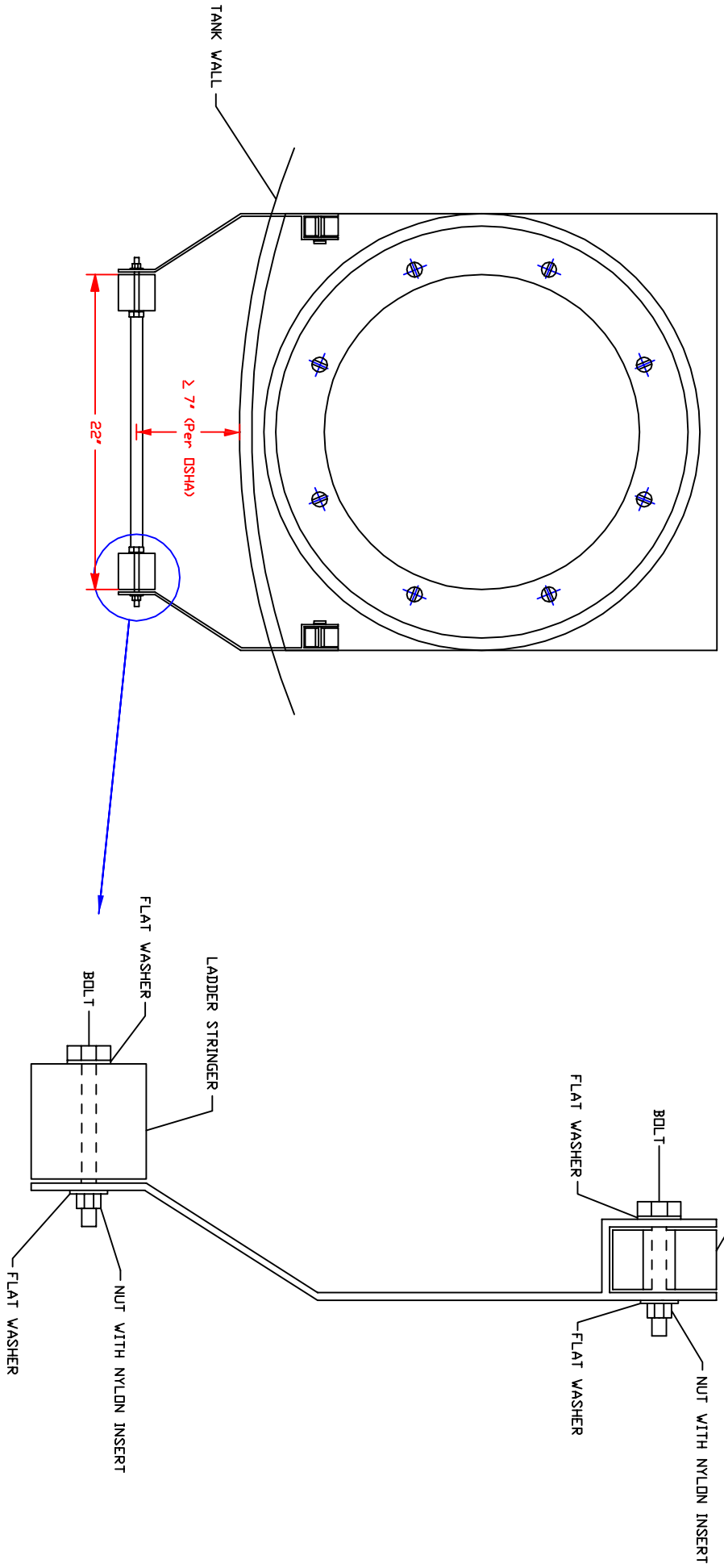


**INSTALLATION DETAIL**



**THE BASIC PACKAGE**

- 1. (2) 304SS BRACKETS DESIGNED FOR USE ON POLY PROCESSING TANKS WITH MOLDED-IN LADDER LUGS & 22' WIDE LADDERS
- 2. 304SS HARDWARE FOR ATTACHMENT TO TANK AND TO LADDER

**NOTES**

- 1. BRACKETS ARE DESIGNED SPECIFICALLY FOR POLY PROCESSING TANKS WITH MOLDED-IN LADDER LUGS AND 22' WIDE LADDERS
- 2. LADDER IS DRILLED BY OTHERS



TITLE	
LADDER BRACKET FOR MOLDED-IN LADDER LUGS (POLY PROCESSING TANKS)	
SCALE: NONE	DRAWN BY: KH
DATE: 4-17-12	CHECKED BY: SI

CRP Tank Specialties, Inc. - 3300 E. 19th Street - Signal Hill, CA 90755  
 562-986-5242 - FAX 562-986-5246 - www.crp tankspecialties.com